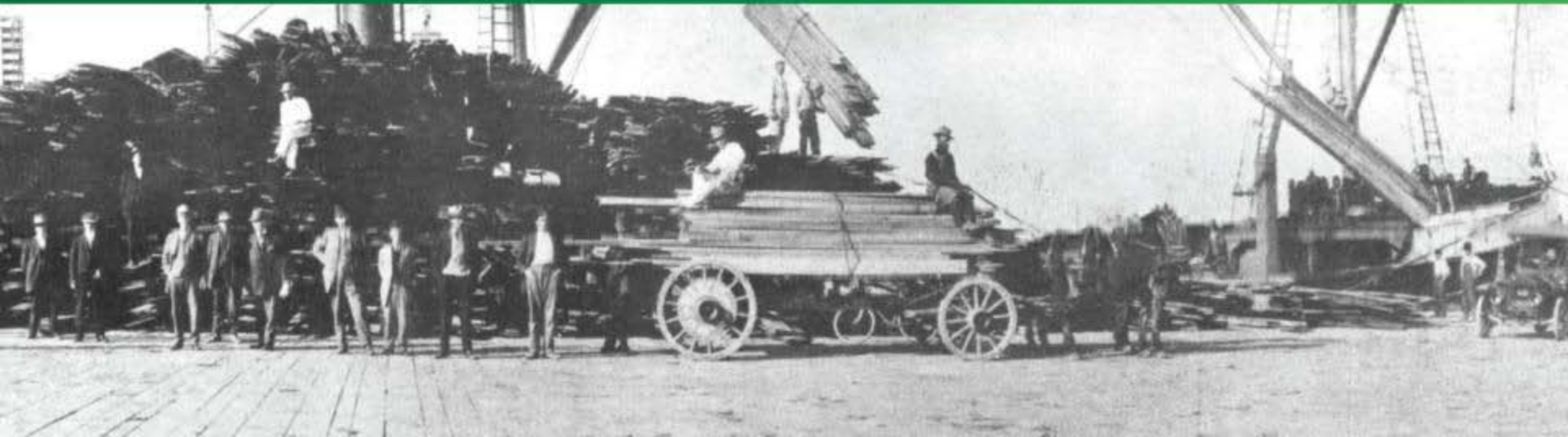




Port of Long Beach's Mid-year Outlook

Richard D. Steinke
Port Executive Director

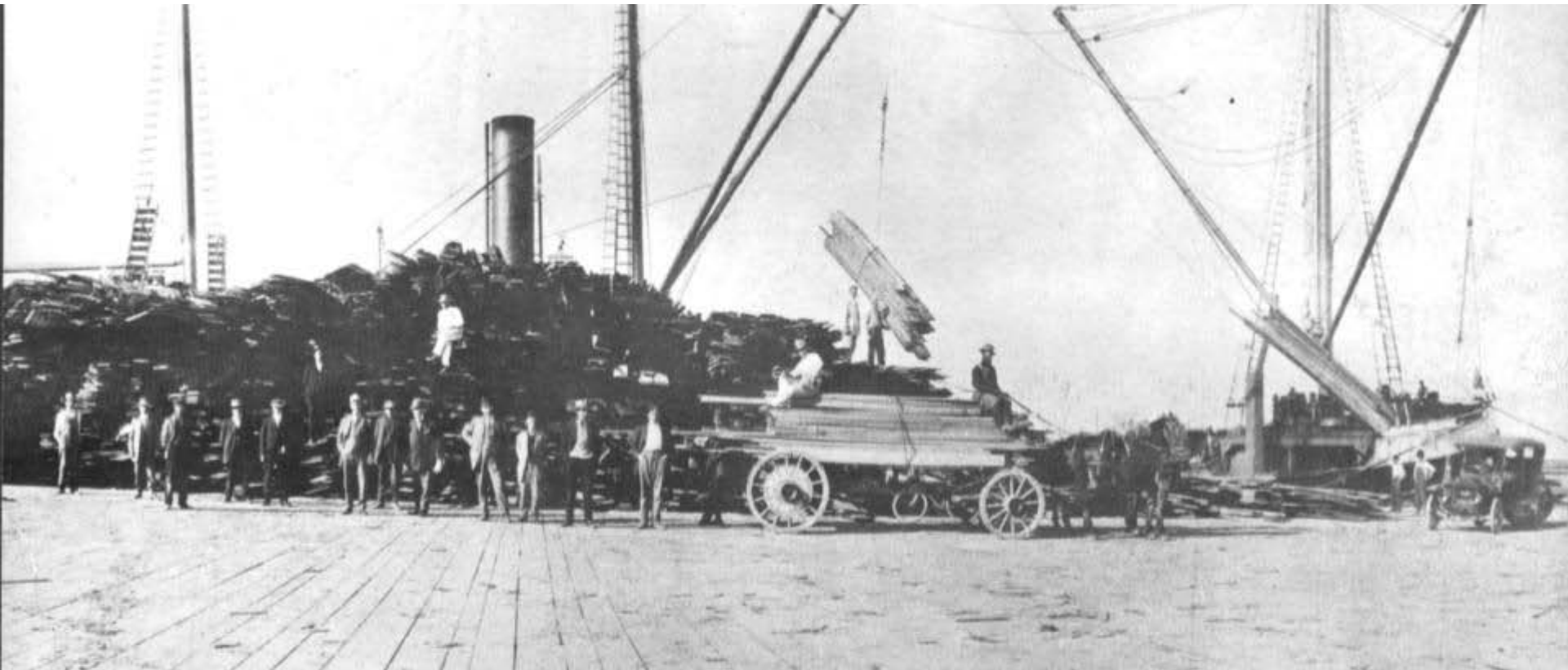


Past

100
Centennial
Celebration



1913 1914 1915 1916 1917 1918 1919 1920 1921 1922 1923 1924 1925 1926 1927 1928 1929 1930 1931 1932 1933 1934 1935 1936 1937 1938 1939 1940 1941 1942 1943 1944 1945 1946 1947 1948 1949 1950 1951 1952 1953 1954 1955 1956 1957 1958 1959 1960 1961 1962 1963 1964 1965 1966 1967 1968 1969 1970 1971 1972 1973 1974 1975 1976 1977 1978 1979 1980 1981 1982 1983 1984 1985 1986 1987 1988 1989 1990 1991 1992 1993 1994 1995 1996 1997 1998 1999 2000 2001 2002 2003 2004 2005 2006 2007 2008 2009 2010 2011 2012 2013 2014 2015 2016 2017 2018 2019 2020 2021 2022 2023 2024 2025 2026 2027 2028 2029 2030 2031 2032 2033 2034 2035 2036 2037 2038 2039 2040 2041 2042 2043 2044 2045 2046 2047 2048 2049 2050 2051 2052 2053 2054 2055 2056 2057 2058 2059 2060 2061 2062 2063 2064 2065 2066 2067 2068 2069 2070 2071 2072 2073 2074 2075 2076 2077 2078 2079 2080 2081 2082 2083 2084 2085 2086 2087 2088 2089 2090 2091 2092 2093 2094 2095 2096 2097 2098 2099 2100



Port was officially opened on June 24, 1911, after delivery of redwood lumber from Eureka

1913 1914 1915 1916 1917 1918 1919 1920 1921 1922 1923 1924 1925 1926 1927 1928 1929 1930 1931 1932 1933 1934 1935 1936 1937 1938 1939 1940 1941 1942 1943 1944 1945 1946 1947 1948 1949 1950 1951 1952 1953 1954 1955 1956 1957 1958 1959 1960 1961 1962 1963 1964 1965 1966 1967 1968 1969 1970 1971 1972 1973 1974 1975 1976 1977 1978 1979 1980 1981 1982 1983 1984 1985 1986 1987 1988 1989 1990 1991 1992 1993 1994 1995 1996 1997 1998 1999 2000 2001 2002 2003 2004 2005 2006 2007 2008 2009 2010 2011 2012 2013 2014 2015 2016 2017 2018 2019 2020 2021 2022 2023 2024 2025 2026 2027 2028 2029 2030 2031 2032 2033 2034 2035 2036 2037 2038 2039 2040 2041 2042 2043 2044 2045 2046 2047 2048 2049 2050 2051 2052 2053 2054 2055 2056 2057 2058 2059 2060 2061 2062 2063 2064 2065 2066 2067 2068 2069 2070 2071 2072 2073 2074 2075 2076 2077 2078 2079 2080 2081 2082 2083 2084 2085 2086 2087 2088 2089 2090 2091 2092 2093 2094 2095 2096 2097 2098 2099 2100

Present

100
Centennial
Celebration



2nd busiest U.S. container cargo seaport; part of the world's 6th busiest port complex

January thru June 2011

100
Centennial
Celebration



- Container cargo total up 6.2% YTD
- Imports up 6%, exports up 4%
- Outlook for 2nd half 2011 uncertain but hopeful

Monthly % TEU change*

100
Centennial
Celebration

Port of
LONG BEACH
The Green Port



June '11
TEUs up 6.6%
over June '10

Imports up
3.5% in June

Exports up
9% in June

*Compared to same month a year ago

Cargo volume update

100
Centennial
Celebration



Long Beach's 6.2% gain
outpaced U.S. West Coast
ports

- Oakland up 5.2%
- POLA up 2.8%
- Tacoma 2.3
- Seattle flat

Future

100
Centennial
Celebration



Port of
LONG BEACH
The Green Port



Port is fiscally strong, investing \$4 billion in terminal, infrastructure improvements

Pier G Redevelopment

100
Centennial
Celebration



Port of
LONG BEACH
The Green Port



\$470 million terminal redevelopment, adding deep-water berths & expanding on-dock rail

New buildings

100
Centennial
Celebration



Port of
LONG BEACH
The Green Port



Under a \$48.5 million contract, new LEED-standard administration, operations and maintenance buildings

Expanded rail yard

100
Centennial
Celebration



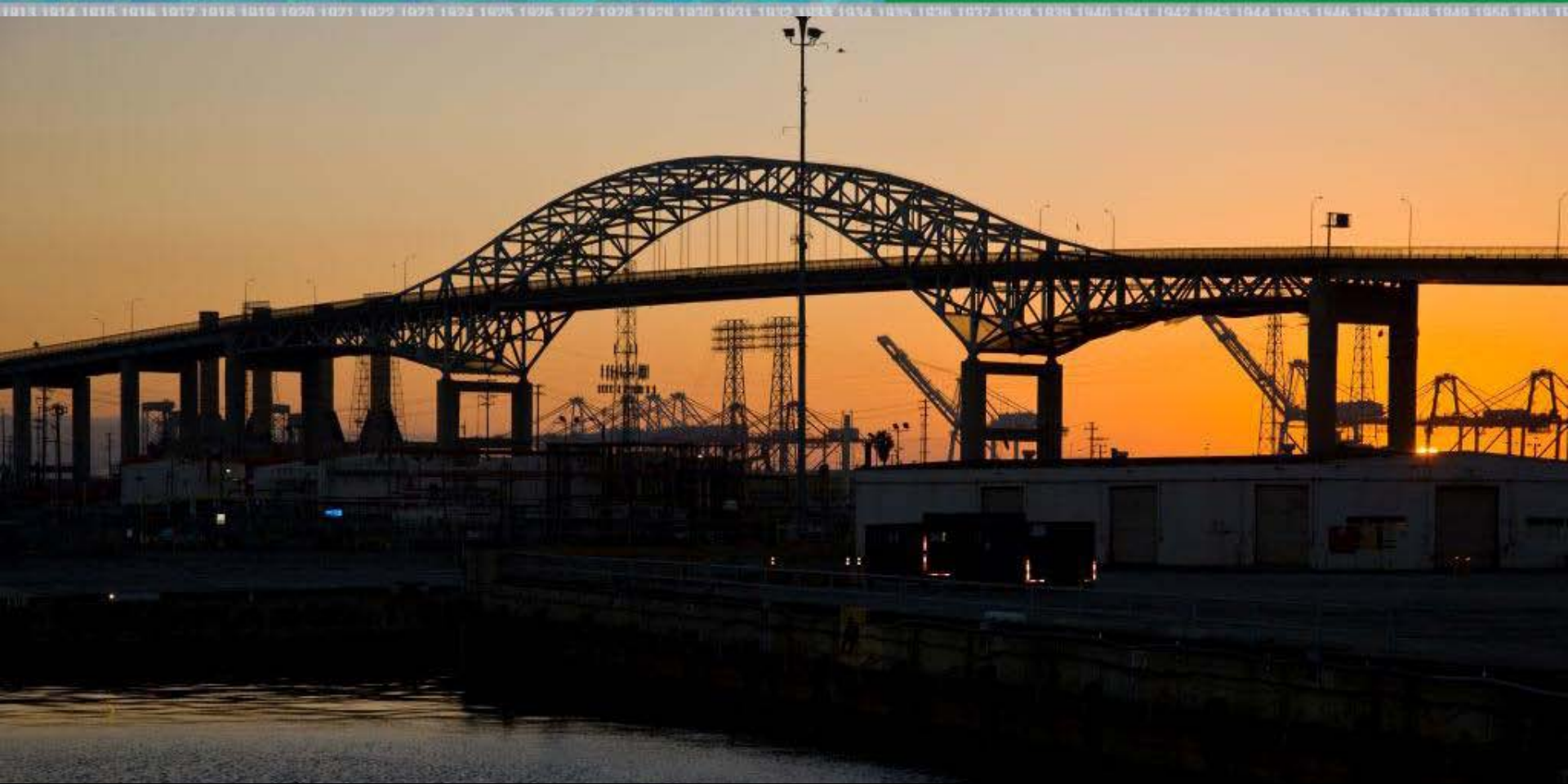
Port of
LONG BEACH
The Green Port



Under a \$30.7 million contract, Excel Paving is building an expanded intermodal rail yard – to be completed in early 2012.

Gerald Desmond Bridge

100
Centennial
Celebration



Replacing obsolete bridge with a \$950 million replacement to improve traffic flow and safety

Design build

100
Centennial
Celebration



Request for proposals for estimated \$700 million design-build contract will be issued at the end of August or early September 2011.

Maintenance move

100
Centennial
Celebration



Port of
LONG BEACH
The Green Port



To make way for new bridge, maintenance facilities and utilities are being relocated.

Middle Harbor

100
Centennial
Celebration



1913 1914 1915 1916 1917 1918 1919 1920 1921 1922 1923 1924 1925 1926 1927 1928 1929 1930 1931 1932 1933 1934 1935 1936 1937 1938 1939 1940 1941 1942 1943 1944 1945 1946 1947 1948 1949 1950 1951



\$1.1 billion Middle Harbor Project will improve terminal efficiency, cut pollution 50%, create 14,000 new jobs

First major contract

100
Centennial
Celebration



Port of
LONG BEACH
The Green Port



Manson and Connolly Pacific awarded \$123.3 million contract for Phase 1 dredging, wharf building.

Rail Enhancements

100
Centennial
Celebration



Port of
LONG BEACH
The Green Port



\$700 million in projects to expand rail yard, realign tracks to support increased on-dock rail operations

Air Quality Report Card

100
Centennial
Celebration



- On track or ahead of schedule in meeting clean air goals
- Diesel emissions reduced 72% -- four years ahead of schedule



Clean Air Initiatives

100
Centennial
Celebration



Port of
LONG BEACH
The Green Port

- Green Flag Vessel Speed Reduction Program
- Shore Power
- Clean Trucks Program



Port-wide plug-in

100
Centennial
Celebration

Port of
LONG BEACH
The Green Port

- By 2014, 50% of container ships will plug in to shore power
- By 2020, 80% of container ships will plug in to shore power



■ Current Port of Long Beach plug-in berths
■ Berths being converted ■ Upcoming berths to be converted

Clean Trucks Program

100
Centennial
Celebration



Port of
LONG BEACH
The Green Port

- 10,000 clean trucks now working the ports
- Age of trucks: 2.2 years old in 2010 vs. 11.2 years old in 2005
- On Jan. 1, 2012, all 2006 and older trucks will be banned



All emissions reduced

100
Centennial
Celebration



Diesel PM 72%

- Met 2014 CAAP goal of -72%

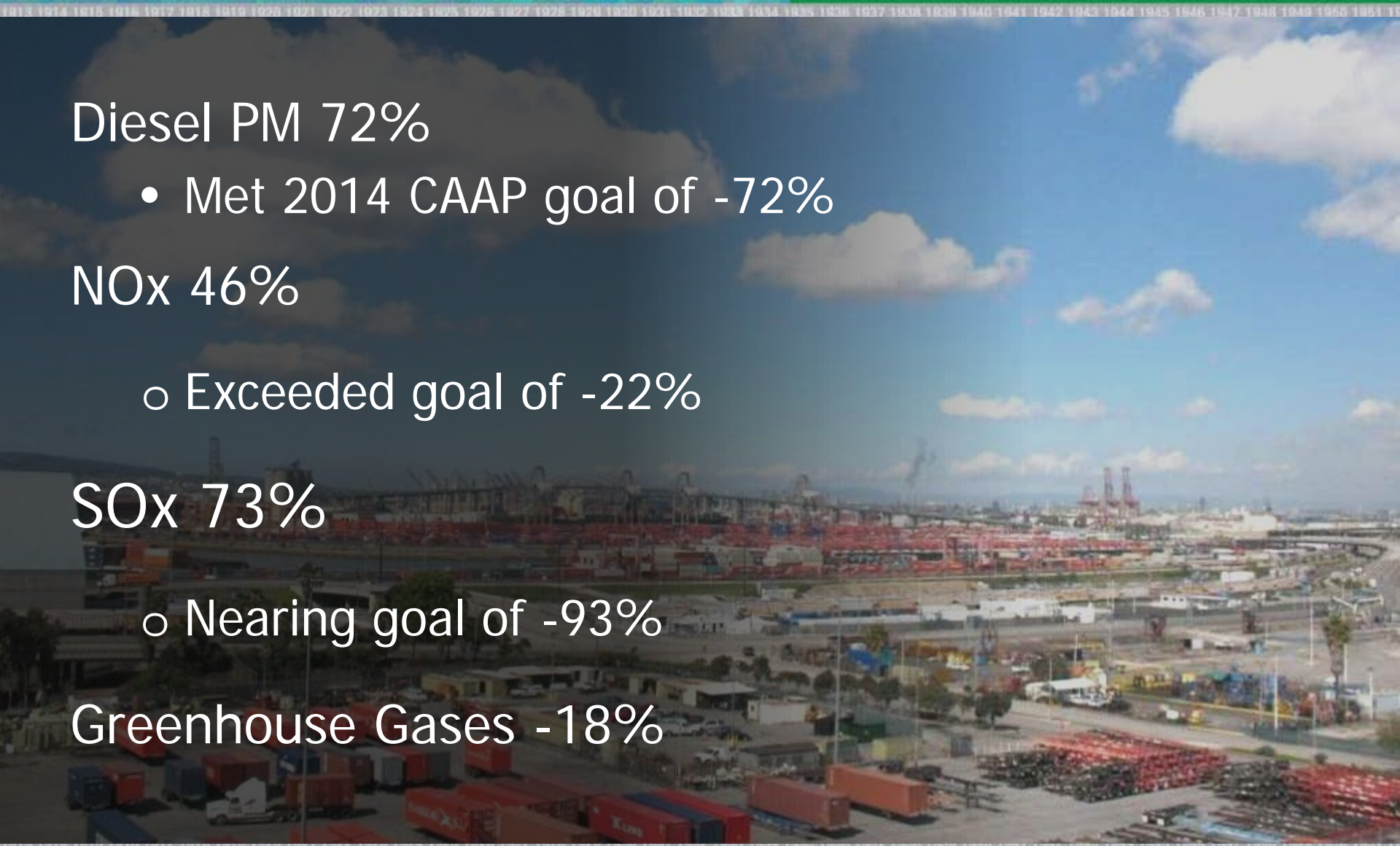
NOx 46%

- Exceeded goal of -22%

SOx 73%

- Nearing goal of -93%

Greenhouse Gases -18%



Summary

100
Centennial
Celebration

Port of
LONG BEACH
The Green Port

- Cargo volumes growing modestly
- \$4 billion in improvements underway
- Diesel emissions down 72%

The outlook

100
Centennial
Celebration



Despite the current
uncertainty,
a bright future ahead of us!